



AIRPORT LAND USE COMMISSION

FOR ORANGE COUNTY

3160 Airway Avenue • Costa Mesa, California 92626 • 949.252.5170 fax: 949.252.6012

AGENDA ITEM 3

February 17, 2022

TO: Commissioners/Alternates
FROM: Lea U. Choum, Executive Officer
SUBJECT: Administrative Status Report

The following attachments are for your review and information:

- JWA Statistics for November and December 2021
- Letter to Irvine City Council regarding City Council action on Housing Element Update
- Letter to Costa Mesa City Council regarding 2021-2029 6th Housing Element Update
- Determination Letter to the City of Buena Park Proposed 2021-2029 Housing Element Update with Site Modifications
- Determination Letter to the City of Cypress Proposed 2021-2029 Housing Element Update
- Determination Letter to the City of Irvine Proposed 2021-2029 Housing Element Update
- Referral Confirmation Letter to the City of Seal Beach for Proposed 2021-2029 Housing Element Update

Respectfully submitted,

Lea U. Choum
Executive Officer

John Wayne Airport Posts November 2021 Statistics

January 21, 2022

SANTA ANA, Calif. - Airline passenger traffic at John Wayne Airport increased in November 2021 as compared to November 2020. In November 2021, the Airport served 854,393 passengers, an increase of 208.4% when compared with the November 2020 passenger traffic count of 277,020 and an increase of 3.3% when compared to November 2019 of 827,140 passengers.

Commercial aircraft operations increased 98.5% and commuter aircraft operations decreased 8.7% when compared with November 2020 levels. Comparing November 2021 to 2019 levels, commercial aircraft operations of 7,244 increased 1.6% and commuter aircraft operations of 504 increased 9.1%.

Total aircraft operations increased in November 2021 as compared with the same month in 2020. In November 2021, there were 24,643 total aircraft operations (take-offs and landings), a 29.1% increase compared to 19,088 total aircraft operations in November 2020, and increased 11.9% compared to November 2019 of 22,014 total aircraft operations.

General aviation activity, which accounted for 68.4% of the total aircraft operations during November 2021, increased 13.3% when compared with November 2020, and increased 17.5% when compared to general aviation activity of 14,342 in November 2019, which accounted for 65.1% of total aircraft operations.

The top three airlines in November 2021 based on passenger count were Southwest Airlines (317,679), American Airlines (137,651) and United Airlines (120,418).

John Wayne Airport
Monthly Airport Statistics - November 2021

	November 2021	November 2020	% Change	Year-To-Date 2021	Year-To-Date 2020	% Change
Total passengers	854,393	277,020	208.4%	6,852,818	3,563,817	92.3%
Enplaned passengers	424,785	135,213	214.2%	3,407,749	1,777,289	91.7%
Deplaned passengers	429,608	141,807	203.0%	3,445,069	1,786,528	92.8%
Total Aircraft Operations	24,643	19,088	29.1%	289,274	220,279	31.3%
General Aviation	16,848	14,870	13.3%	216,956	172,444	25.8%
Commercial	7,244	3,649	98.5%	67,083	42,533	57.7%
Commuter ¹	504	552	-8.7%	4,861	4,786	1.6%
Military	47	17	176.5%	374	516	-27.5%
Air Cargo Tons ²	1,601	1,641	-2.4%	16,693	16,768	-0.4%

International Statistics ³

(included in totals above)

	November 2021	November 2020	% Change	Year-To-Date 2021	Year-To-Date 2020	% Change
Total Passengers	16,153	0	0.0%	94,127	17,246	445.8%
Enplaned passengers	7,910	0	0.0%	45,460	8,703	422.3%
Deplaned passengers	8,243	0	0.0%	48,667	8,543	469.7%
Total Aircraft Operations	197	0	0.0%	1,188	172	590.7%

1. Aircraft used for regularly scheduled air service, configured with not more than seventy (70) seats, and operating at weights not more than ninety thousand (90,000) pounds.

2. All-Cargo Carriers: 1,452 tons

Passenger Carriers (incidental belly cargo): 149 tons

Current cargo tonnage figures in this report are for: October 2021

3. Includes all Canada and Mexico Commercial passengers and operations.

-###-

John Wayne Airport (SNA) is owned by the County of Orange and is operated as a self-supporting enterprise that receives no general fund tax revenue. The Airport serves more than 10 million passengers annually and reaches more than 30 nonstop destinations in the United States, Canada and Mexico. More information can be found at www.ocair.com. Like us on [facebook.com/johnwayneairport](https://www.facebook.com/johnwayneairport), or follow us on [Twitter @johnwayneair](https://twitter.com/johnwayneair) and [Instagram @johnwayneair](https://www.instagram.com/johnwayneair).

To receive John Wayne Airport news releases automatically, go to www.ocair.com and click [Subscribe](#).

John Wayne Airport Posts December 2021 Statistics

January 28, 2022

SANTA ANA, Calif. - Airline passenger traffic at John Wayne Airport increased in December 2021 as compared to December 2020. In December 2021, the Airport served 847,671 passengers, an increase of 266.9% when compared with the December 2020 passenger traffic count of 231,033 and a decrease of 4.9% when compared to December 2019 of 891,492 passengers.

Commercial aircraft operations increased 86.9% and commuter aircraft operations increased 9.5% when compared with December 2020 levels. Comparing December 2021 to 2019 levels, commercial aircraft operations of 7,170 decreased 5.0% and commuter aircraft operations of 508 increased 23.6%.

Total aircraft operations increased in December 2021 as compared with the same month in 2020. In December 2021, there were 22,410 total aircraft operations (take-offs and landings), a 24.1% increase compared to 18,061 total aircraft operations in December 2020, and increased 8.2% compared to December 2019 of 20,718 total aircraft operations.

General aviation activity, which accounted for 65.6% of the total aircraft operations during December 2021, increased 7.0% when compared with December 2020, and increased 15.6% when compared to general aviation activity of 12,731 in December 2019, which accounted for 61.4% of total aircraft operations.

The top three airlines in December 2021 based on passenger count were Southwest Airlines (315,770), American Airlines (142,915) and United Airlines (120,831).

John Wayne Airport
Monthly Airport Statistics - December 2021

	December 2021	December 2020	% Change	Year-To-Date 2021	Year-To-Date 2020	% Change
Total passengers	847,671	231,033	266.9%	7,700,489	3,794,850	102.9%
Enplaned passengers	420,797	115,738	263.6%	3,828,546	1,893,027	102.2%
Deplaned passengers	426,874	115,295	270.2%	3,871,943	1,901,823	103.6%
Total Aircraft Operations	22,410	18,061	24.1%	311,684	238,340	30.8%
General Aviation	14,712	13,745	7.0%	231,668	186,189	24.4%
Commercial	7,170	3,837	86.9%	74,253	46,370	60.1%
Commuter ¹	508	464	9.5%	5,369	5,250	2.3%
Military	20	15	33.3%	394	531	-25.8%
Air Cargo Tons ²	1,550	1,435	8.0%	18,243	18,203	0.2%
International Statistics ³				(included in totals above)		
	December 2021	December 2020	% Change	Year-To-Date 2021	Year-To-Date 2020	% Change
Total Passengers	17,919	0	0.0%	112,046	17,246	549.7%
Enplaned passengers	9,065	0	0.0%	54,525	8,703	526.5%
Deplaned passengers	8,854	0	0.0%	57,521	8,543	573.3%
Total Aircraft Operations	212	0	0.0%	1,400	172	714.0%

1. Aircraft used for regularly scheduled air service, configured with not more than seventy (70) seats, and operating at weights not more than ninety thousand (90,000) pounds.

2. All-Cargo Carriers: 1,373 tons

Passenger Carriers (incidental belly cargo): 177 tons

Current cargo tonnage figures in this report are for: November 2021

3. Includes all Canada and Mexico Commercial passengers and operations.

-###-

John Wayne Airport (SNA) is owned by the County of Orange and is operated as a self-supporting enterprise that receives no general fund tax revenue. The Airport serves more than 10 million passengers annually and reaches more than 30 nonstop destinations in the United States, Canada and Mexico. More information can be found at www.ocair.com. Like us on [facebook.com/johnwayneairport](https://www.facebook.com/johnwayneairport), or follow us on [Twitter @johnwayneair](https://twitter.com/johnwayneair) and [Instagram @johnwayneair](https://www.instagram.com/johnwayneair).

To receive John Wayne Airport news releases automatically, go to www.ocair.com and click [Subscribe](#).



AIRPORT LAND USE COMMISSION

FOR ORANGE COUNTY

3160 Airway Avenue • Costa Mesa, California 92626 • 949.252.5170 fax: 949.252.6012

January 8, 2022

City Council Members
City of Irvine
P.O. Box 19575
Irvine, CA 92623

Subject: City Council Agenda Item No. 3.1 General Plan Amendment to Update the Housing Element

Dear City Council Members:

Item 3.1 on your January 11, 2022 City Council Meeting Agenda states that the Council shall take the following actions related to the General Plan Amendment to Update the Housing Element:

- 1) Conduct the public hearing.
- 2) Adopt - A RESOLUTION OF THE CITY COUNCIL OF THE CITY OF IRVINE, CALIFORNIA, ADOPTING A NEGATIVE DECLARATION FOR GENERAL PLAN AMENDMENT 00832121-PGA, AND APPROVING GENERAL PLAN AMENDMENT 00832121-PGA FOR THE 2021-2029 HOUSING ELEMENT UPDATE

The proposed Housing Element Update has been referred to the Airport Land Use Commission (ALUC) for Orange County for a consistency determination at their regularly scheduled meeting of January 20, 2022.

Pursuant to California Public Utilities Code (PUC) Section 21676(b):

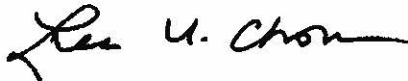
"Prior to the amendment of a general plan or specific plan, or the adoption or approval of a zoning ordinance or building regulation within the planning boundary established by the airport land use commission pursuant to Section 21675, the local agency shall first refer the proposed action to the commission for a consistency review. If the commission determines that the proposed action is inconsistent with the commission's plan, the referring agency shall be notified. The local agency may, after a public hearing, propose to overrule the commission by a two-thirds vote of its governing body if it makes specific findings that the proposed action is consistent with the purposes of this article stated in Section 21670."

The City's proposed General Plan Amendment must be heard by City Council *after* ALUC findings have been made on January 20, 2022. Otherwise, the intent of the PUC will be overlooked and the City would be in violation of PUC 21676.

Also, please keep in mind that to overrule ALUC's findings, the City must provide 45 days' notice of an intent to overrule ALUC's findings and must allow ALUC thirty (30) days to provide advisory comments before a hearing to overrule is conducted. Failing to do so would be a violation of PUC Sections 21676 and 21676.5.

Thank you for your consideration on this matter. Should you need additional information, please contact me at 949-252-5123 or lchoum@ocair.com.

Sincerely,

A handwritten signature in black ink, appearing to read "Lea U. Choum".

Lea U. Choum
Executive Officer, ALUC for Orange County

cc: Members of the ALUC for Orange County
Marika Poynter, Principal Planner, City of Irvine



AIRPORT LAND USE COMMISSION

FOR ORANGE COUNTY

3160 Airway Avenue • Costa Mesa, California 92626 • 949.252.5170 fax: 949.252.6012

February 1, 2022

City Council Members
City of Costa Mesa
77 Fair Drive
Costa Mesa, CA 92626

Subject: Public Hearing Item #1 – City of Costa Mesa 2021-2029 (SIXTH CYCLE) Housing Element (GP-21-01)

City Council Members:

Public Hearing Item #1 on your February 1, 2022 City Council Meeting Agenda states that the Council shall "adopt a Resolution that approves and adopts the Initial Study/Mitigated Negative Declaration (IS/MND) including the Mitigation Monitoring and Reporting Program, and approve General Plan Amendment 21-01 for the City of Costa Mesa 2021-2029 (Sixth Cycle) Housing Element update."

On December 23, 2021, the proposed Housing Element Update was referred to the Airport Land Use Commission (ALUC) for Orange County for a consistency determination at its January 20, 2022 meeting. After reviewing the submittal and discussing the proposed sites with Community Development staff, we received a letter from Community Development Director Jennifer Le requesting to withdraw the Housing Element Update submittal and remove the item from the ALUC agenda (see attached letter). On Friday, January 28th, we received notice that the Housing Element would be on today's agenda with a staff recommendation of approval by City Council.

Please note that housing sites proposed in the Housing Element Update fall within the Planning/Notification Area for John Wayne Airport, and therefore require ALUC review. Pursuant to California Public Utilities Code (PUC) Section 21676(b):

"Prior to the amendment of a general plan or specific plan, or the adoption or approval of a zoning ordinance or building regulation within the planning boundary established by the airport land use commission pursuant to Section 21675, the local agency shall first refer the proposed action to the commission for a consistency review. If the commission determines that the proposed action is inconsistent with the commission's plan, the referring agency shall be notified. The local

agency may, after a public hearing, propose to overrule the commission by a two-thirds vote of its governing body if it makes specific findings that the proposed action is consistent with the purposes of this article stated in Section 21670."

As such, in accordance with state law, the City's proposed General Plan Amendment/Housing Element Update must be reviewed by ALUC prior to approval by City Council. Otherwise, the intent of the PUC will be overlooked and the City would be in violation of PUC 21676.

Also, please keep in mind that to overrule ALUC's findings, the City must provide 45 days' notice of an intent to overrule ALUC's findings and must allow ALUC thirty (30) days to provide advisory comments before a hearing to overrule is conducted. Failing to do so would be a violation of PUC Sections 21676 and 21676.5.

Thank you for your consideration on this matter. Should you need additional information, please contact me at 949-252-5123 or lchoum@ocair.com.

Sincerely,



Lea U. Choum
Executive Officer, ALUC for Orange County

cc: Members of the ALUC for Orange County
Jennifer Le, Community Development Director



CITY OF COSTA MESA

P.O. BOX 1200 • 77 FAIR DRIVE • CALIFORNIA 92628-1200

DEVELOPMENT SERVICES DEPARTMENT

January 13, 2022

Lea U. Choum
Planning Manager, Facilities Development
John Wayne Airport, Orange County
3160 Airway Avenue
Costa Mesa, CA 92626

Dear Lea Choum,

As we discussed, this letter is in response to the City's recent submittal and request for scheduling the Housing Element consideration at the January 21, 2022 Airport Land Use Commission regular meeting. Thank you for the time that you and other ALUC staff has provided to Costa Mesa in this regard. As we discussed, staff is considering the best options going forward and, presently, narrowing-down what this path may be. Therefore, please consider this letter as the City's request to, for now, table the ALUC review. Staff will reach out to you once a clearer direction for this review is determined.

Thank you again for your efforts assisting the City with this matter.

Sincerely,

JENNIFER LE,

Director of Economic and Development Services



AIRPORT LAND USE COMMISSION

FOR ORANGE COUNTY

3160 Airway Avenue • Costa Mesa, California 92626 • 949.252.5170 fax: 949.252.6012

January 25, 2022

Swati Meshram, PhD, AICP, Planning Manager
City of Buena Park
6650 Beach Blvd., P.O. Box 5009
Buena Park, CA 92622-5009

Subject: ALUC Determination for Buena Park Housing Element Update 2021-2029 with Site Modifications

Dear Dr. Meshram:

During the public meeting held on January 20, 2022, the Airport Land Use Commission (ALUC) for Orange County considered the subject item. The matter was duly discussed and with a 5-0 vote, the Commission found the proposed Buena Park Housing Element Update (2021-2029) with Site Modifications as shown in Attachment 1, to be Consistent with the *Airport Environs Land Use Plan (AELUP) for Fullerton Municipal Airport* and the *AELUP for Joint Forces Training Base Los Alamitos*.

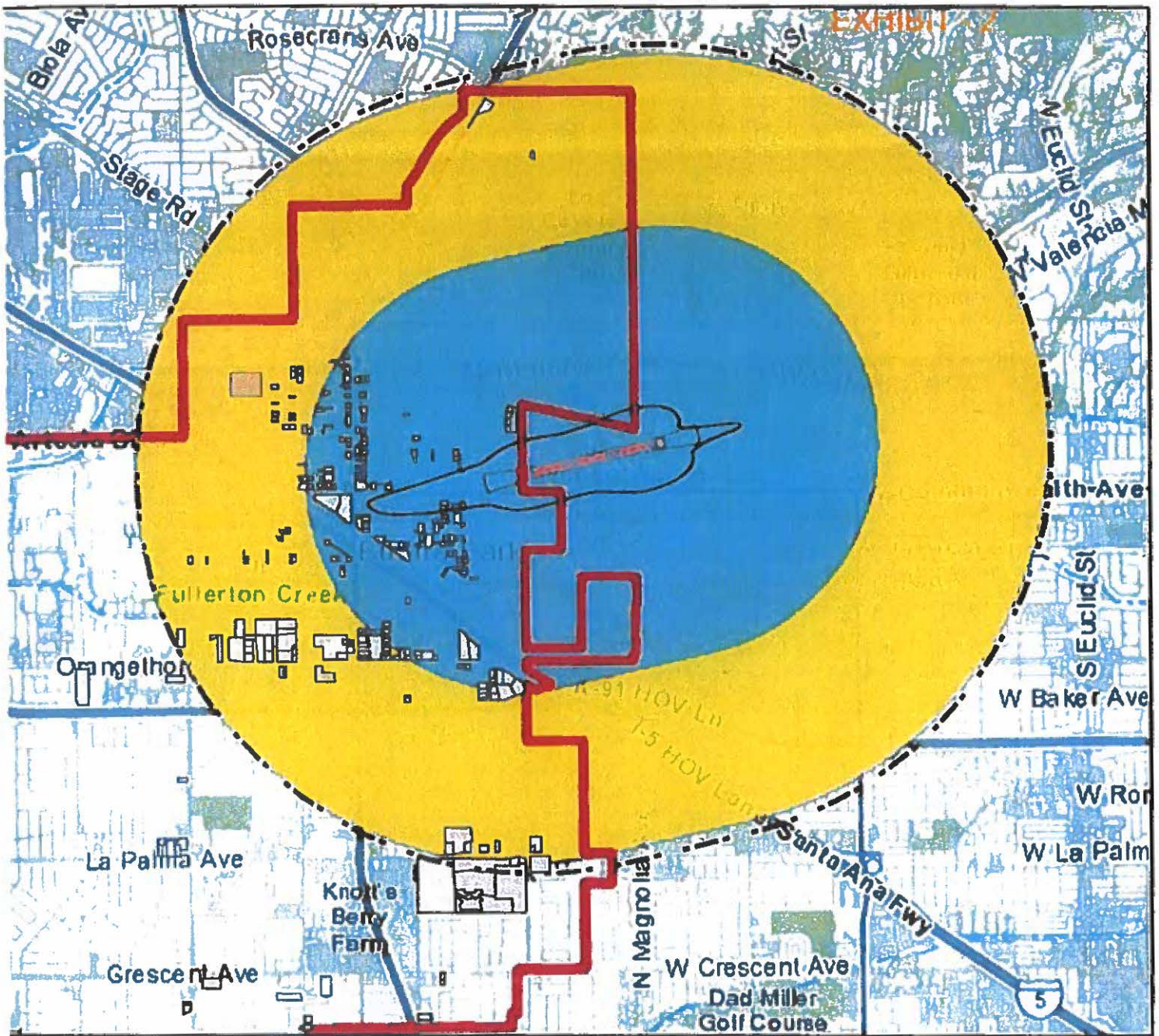
Please contact me at lchoum@ocair.com or Julie Fitch at jfitch@ocair.com or (949) 252-5170 if you have any questions regarding this proceeding.

Sincerely,

Lea U. Choum
Executive Officer

Attachment: Housing Element Update Exhibit received January 11, 2022 (Attachment 1 of January 20, 2022 Staff Report)

cc: ALUC Commissioners



RECEIVED







JAN 11 2022

AIRPORT LAND USE COMMISSION



CITY OF BUENA PARK, CA

HOUSING ELEMENT UPDATE 6TH CYCLE - ORANGE COUNTY ALUC

-  6th Cycle Sites
-  City Boundary
-  FMA Obstruction Imaginary Surface (Conical)
-  FMA Obstruction Imaginary Surface (Horizontal)
-  60 CNEL Noise Contour
-  Notification Area Radius



ATTACHMENT 1



AIRPORT LAND USE COMMISSION

FOR ORANGE COUNTY

3160 Airway Avenue • Costa Mesa, California 92626 • 949.252.5170 fax: 949.252.6012

January 25, 2022

Alicia Velasco, Planning Director
City of Cypress
5275 Orange Ave.
Cypress CA 90630

Subject: ALUC Determination for Cypress Housing Element Update 2021-2029

Dear Ms. Velasco:

During the public meeting held on January 20, 2022 the Airport Land Use Commission (ALUC) for Orange County considered the subject item. The matter was duly discussed and with a 4-0 vote and Commissioner Beverburg abstaining, the Commission found the proposed Cypress Housing Element Update (2021-2029) to be Consistent with the *Airport Environs Land Use Plan for Joint Forces Training Base - Los Alamitos (AELUP for JFTB-Los Alamitos)*.

Please contact me at lchoum@ocair.com or Julie Fitch at jfitch@ocair.com or (949) 252-5170 if you have any questions regarding this proceeding.

Sincerely,

Lea U. Choum
Executive Officer

cc: ALUC Commissioners



AIRPORT LAND USE COMMISSION

FOR ORANGE COUNTY

3160 Airway Avenue • Costa Mesa, California 92626 • 949.252.5170 fax: 949.252.6012

January 25, 2022

Marika Poynter, Principal Planner
City of Irvine
1 Civic Center Plaza
P.O. Box 19575
Irvine, CA 92623-9575

Subject: ALUC Determination for Irvine Housing Element Update 2021-2029

Dear Ms. Poynter:

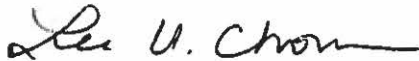
During the public meeting held on January 20, 2022, the Airport Land Use Commission (ALUC) for Orange County considered the subject item. The matter was duly discussed and with a 5-0 vote, the Commission found the proposed Housing Element Update 2021-2029 6th Cycle (00832121-PGA) to be Inconsistent with the *Airport Environs Land Use Plan for John Wayne Airport (AELUP for JWA)* per:

- Section 2.1.1 Aircraft Noise that the “aircraft noise emanating from airports may be incompatible with general welfare of the inhabitants within the vicinity of an airport.”
- Section 2.1.2 Safety Compatibility Zones in which “the purpose of these zones is to support the continued use and operation of an airport by establishing compatibility and safety standards to promote air navigational safety and to reduce potential safety hazards for persons living, working or recreating near JWA.”
- Section 2.1.4, and PUC Section 21674 which state that the Commission is charged by PUC Section 21674(a) “to assist local agencies in ensuring compatible land uses in the vicinity of ...existing airports to the extent that the land in the vicinity of those airports is not already devoted to incompatible uses,” and PUC Section 21674(b) “to coordinate planning at the state, regional and local levels so as to provide for the orderly development of air transportation, while at the same time protecting the public health, safety and welfare.”

In addition, in accordance with PUC Section 21676.5(a), the Commission voted 5-0 to require that the City submit all subsequent City actions, regulations, and permits within JWA's airport influence area to the Commission for review until the City's general plan is revised or specific overrule findings are made.

Please contact me if you would like to set up a meeting to discuss the future actions that would require submittal to ALUC. I can be reached at lchoum@ocair.com or (949) 252-5170. Thank you.

Sincerely,

A handwritten signature in black ink, appearing to read "Lea U. Choum", with a stylized flourish at the end.

Lea U. Choum
Executive Officer

cc: ALUC



AIRPORT LAND USE COMMISSION

FOR ORANGE COUNTY

3160 Airway Avenue • Costa Mesa, California 92626 • 949.252.5170 fax: 949.252.6012

February 8, 2022

Alexa Smittle
Community Development Director
City of Seal Beach
211 Eighth Street
Seal Beach, CA 90740

Subject: ALUC Referral Confirmation – City of Seal Beach 2021-2029 Housing Element Update

Dear Ms. Smittle:

This is to confirm that Airport Land Use Commission (ALUC) staff has received the City of Seal Beach referral request for the 2021-2029 Housing Element Update.

Your submittal, being complete and sufficient, for a review and consistency determination by the Commission, is hereby accepted, and will be agendaized for the next Commission meeting of February 17, 2022 unless otherwise noticed. Your attendance at the meeting will be appreciated in case there are questions regarding this item. The meeting location is included below for your information:

4:00 p.m.
JWA/Airport Commission Meeting Room
3160 Airway Avenue
Costa Mesa, CA 92626
(Parking is behind building.)

A copy of the meeting agenda and staff report regarding your item will be provided to you prior to the Commission meeting. Please contact Julie Fitch at (949) 252-5284 or at jfitch@ocair.com if you need additional information regarding the Commission's review of this project.

Sincerely,

A handwritten signature in blue ink, appearing to read 'Lea U. Choum', is written over a horizontal line.

Lea U. Choum
Executive Officer